

HCA LONG TERM SURVEY PLAN
Updated to June 2018

Table of MSRs, base/site calls, usage category, and current survey category

Note: In the tables below, high priority surveys have been emphasized in **yellow**. Indications of planned surveys appear in **red**. Indications of surveys completed appear in **blue**.

I. ANTARCTIC PENINSULA

Categories

Category	Usage
A	Frequent
B	Regular
C	Infrequent

Category	Current survey status
A	Adequately surveyed
B	Requires re-survey at larger scale or to S-44 standard
C	Has not been systematically surveyed/Unsurveyed

Main corridors (see diagram on last page for MSR references)

MSR *	Name	Usage category	Survey category	Notes and INT chart coverage. Published and <i>proposed</i> .
1	James Ross Island circular route	B+C	A + C	Prince Gustav Channel & Eastern corridor 55% surveyed. 45% unsurveyed. <i>Blocks surveyed by UK 2005-07. Blocks planned by UK for future seasons.</i> INT 9153
2	Joinville Island circular route	A+B	A + C	45% surveyed (Antarctic Sound), 55% unsurveyed. <i>Blocks surveyed by UK 2005-17 and Uruguay & Venezuela 2008. Blocks planned by UK for future seasons</i> INT 9154
3	Orleans Strait to Antarctic Sound	B	B + C	INT 9155 <i>Blocks surveyed by Chile 2018. 10% complete</i>
4	Gerlache strait	A	A + C	97% surveyed. INT 9103, 9104, 9165, 9156 & 9157 <i>Blocks surveyed by Chile 2010-18, Colombia 2015, Spain 2016 & UK 2005-17 also Flandres Bay 35% surveyed</i>
5	Bismarck Strait	A+B	A + B	Approaches to Palmer Station and Port Lockroy. INT 9158. <i>Block surveyed by UK 2005-06, 2011 & Chile 2010, 2011 & 2016</i>
6	Lemaire Channel	A	A+B	Petermann Is, Pleneau Is, Argentine Is, Yalour Is. 75% surveyed. INT 9106 INT9118. <i>Block surveyed by UK 2005/06 & 2012/13 & Xplore expeditions/SHOM 2013</i>
7	Grandidier Channel	A+B	B	INT 9158, INT9132 & 9159 15% surveyed. <i>Blocks surveyed by UK</i>
8	Cape Garcia to Jagged Island	B	C	15% surveyed. INT9107 & 9159 <i>Blocks surveyed by UK 2006/07</i>
9	Crystal Sound	B	B	INT 9160 <i>Blocks surveyed by UK 2017 60% complete</i>
10	Liard Island to Rothera	B	C	INT 9161, 9108 & 9163 <i>Blocks surveyed by UK 2018 10% complete</i>
11	Marguerite Bay	C	B + C	INT 9163 & 9164
12	Woodfield Channel	C	B	INT 9163
13	Woodfield Channel to Matha Strait	B	C	INT 9162 & 9160
13a	Northern transit from Adelaide Is.	C	C	INT 9162
14	Matha Strait to Hugo Island	B	C	INT 9160, 9159 & 9158 <i>Blocks surveyed by UK 2017 15% complete</i>
15	Exit from Melchior Islands	B	B + C	INT 9156, 9157 & 9158

* MSR = Maritime Shipping Route. The figures / letters in this column are shown on the MSR diagram which is on the last page.

16	Deception Island to Antarctic Sound	B	B + C	INT 9151, 9152, 9154, & 9155. <i>Blocks planned by UK for future seasons</i>
17	South Shetlands MSR	A	A+C	INT 9151. SW corridor surveyed by UK, Livingstone Island to Penguin Island complete. <i>Blocks surveyed by UK 2005-17, Brazil 2007-08 & Spain 2011/16</i>
17A	Deception Island circular route	A	A	INT 9120 Deception Island circular route 100% complete. <i>Blocks surveyed by UK in 2005-08. Large block from Livingston Is. To Deception Is. Surveyed by Spain 2011-16</i>
18	Elephant Island MSR	A+C	A+C	INT 9150 <i>Blocks surveyed by Brazil 2006</i>
19	Elephant Island to KGI	A	C	INT 9150, INT 9151 <i>Blocks surveyed by Brazil 2005</i>
20	Deception Is to Brabant Island	A	C	INT 9120, INT 9155, 9156, 9157 <i>Blocks surveyed by UK 2005-06</i>
21	Elephant Islands to Danger Islands	B	C	INT 9150, 9154 & 9170
22	Elephant Island to Antarctic Sound	B	B	INT 9150, 9151 & 9154

Branch corridors and approaches

MSR	Name	Usage category	Survey category	Notes and INT chart coverage. Published and proposed
A	Marambio	B	C	INT 9100
B	Duse Bay and Eagle Island	B	C	Includes Crystal Hill. INT 9154
C	Paulet Island	A	A + C	50% surveyed, remaining area top of UKHO priority. INT 9112 <i>Blocks surveyed by UK 2005-06</i>
D	Brown Bluff and Fridtjof Sound	A	A+C	INT 9154 <i>Blocks surveyed by UK 2006-07</i> Approaches to Brown Bluff complete up to 50m contour
E	Hope Bay	A	A	INT 9101. 95% complete. <i>Blocks surveyed by UK 2006-17 and Uruguay 2008</i>
F	Gourdin Island and Siffrey Point	B	C	INT 9154
G	Bernado O' Higgins and approaches	C	C	INT 9102
H	Curtiss Bay	C	C	INT 9165, 9155 & 9156
I	Hydrurga Rocks	B	C	INT 9165, 9156 & 9157
J	Alcock Island	C	C	INT 9156 & 9157
K	Portal Point	C	A+C	INT 9112 & 9166 <i>Charlotte Bay surveyed by UK 85% complete.</i>
L	Enterprise Island	B	C	INT 9166 & 9157 <i>Block surveyed by Xplore Expeditions/SHOM 2013</i>
M	Melchior Islands and approaches	A+C	A+C	75% complete. INT 9157 & 9117 <i>Blocks surveyed by UK 2005-17</i>
N	Errera Channel	A	A+C	Includes Cuverville Is, Danco Is and Ronge Is. INT 9103 95% complete. <i>Blocks surveyed by UK 2005-06 & Chile 2014 & 2016</i>
O	Andvord Bay	A	A	Includes Neko Harbour. INT 9158 & 9103. 100% complete. <i>Block surveyed by UK 2005-06 & Chile 2014-16</i>
P	Paradise Harbour	A	A+B	Almirante Station and Waterboat Point. INT 9104 & INT 9135. Paradise Harbour 95%, Bryde Channel 90%, Furguson Channel 80%. <i>Blocks surveyed by UK 2007-08 & Chile 2010-16</i>
Q	Neumayer Channel and Port Lockroy	A	A	100% complete. INT 9158 & 9104 <i>Blocks surveyed by UK 2005-06 & Chile 2010-16</i>
R	Arthur harbour	B	C	INT 9105 <i>Blocks surveyed by UK 2013 75% complete</i>
S	French Passage	B	B	INT 9106 <i>Blocks surveyed by UK 2017 50% complete</i>
T	Prospect Point	B	C	INT 9107
U	Pendleton Strait	B	B	INT 9159 <i>Blocks surveyed by UK 2017 60% complete</i>
V	Matha Strait	B	C	INT 9160 <i>Blocks surveyed by UK 2018 50% complete</i>

MSR	Name	Usage category	Survey category	Notes and INT chart coverage. Published and proposed
W	Detaille Island and approaches	C	C	INT 9161 & 9117. Detaille Island now has Historic Monument status, and following restoration will receive increased vessel traffic. 60% surveyed, all shoals close to Island detected.
X	Lallemand Fjord	C	C	INT 9161
Y	Shumskiy Cove	C	C	INT 9108
Z	Rothera	B	A	BAS and RN vessels. INT 9109. 100% complete. <i>Blocks surveyed by UK 2007-18</i>
Aa	Avian Island	C	B	INT 9110
Ab	Approaches to Millerand Island	C	B	INT 9111
Ac	Port Foster and Neptunes Bellows	A	A+B	INT 9120 Port Foster and Whalers Bay 99% complete. Neptunes Bellows completed to position Ravn Rock. <i>Blocks surveyed by UK 2005-16 & Spain 2011/16</i>
Ad	South bay and Hannah Point	A	A	INT 9121. 96% complete. <i>Block surveyed by UK in 2006-07 & Spain 2011-12</i>
Ae	McFarlane Strait	A	A + C	Half Moon Is cat A, Yankee Harbour 100%, McFarlane Strait 60%. INT 9121 & 9112. <i>Blocks surveyed by UK in 2005-07 & Spain 2016</i>
Af	English Strait	A	A+B	Aitcho Islands and Discovery Bay. INT 9122, 9117 & 9152. 78% complete. NE section still unsurveyed. <i>Blocks surveyed by UK in 2005-07, Ecuador in 2004-12, Spain 2016 and Chile.</i>
Ag	Robert Point	C	C	INT 9151
Ah	Nelson Strait	C	A+C	INT 9151. 80% complete. <i>Block surveyed by UK in 2005-07, Blocks surveyed by Chile in 2005-08</i>
Ai	Maxwell Bay and approaches	A	A+C	Ardley Cove, Marian Cove and Potter Cove. INT 9123. 85% complete. <i>Blocks surveyed by UK in 2005-07, Potter Cove surveyed by Argentina 2005-06, Uruguay 2008 & UK 2011/12. Blocks surveyed by Brazil 2013-17 & Spain 2016</i>
Aj	Admiralty Bay	A	A	Arctowski Station, Ferraz Station, Mackellar Inlet and Martel Inlet. 97%. INT 9125. <i>Block/s surveyed by UK in 2006-07, Peru 2002-06 & 2012-13, Brazil 2007-08 & 2013-17, Chile 2016, Venezuela 2008-09.</i>
Ak	Penguin Island and approaches	A	A+C	Endurance 2005 survey. INT 9151 <i>Approach channel surveyed by UK 2006, 50% complete. Block planned by Brazil 2011</i>
Al	Cape Lookout	B	C	INT 9112
Am	Point Wild	A	C	INT 9150 & INT 9113. 60% surveyed, block to corridor 18 remaining. <i>Blocks surveyed by UK in 2012</i>
An	Cape Valentine	B	C	INT 9150
Ao	Danger Islands	C	C	INT 9154
Ap	Dundee Island	B	A+C	INT 9154 60% <i>Blocks surveyed by UK in 2005-07, Block surveyed by Argentina in 2005-07</i>
Aq	Herbert Sound	B	A+C	INT 9153. 90% complete. <i>Blocks surveyed by UK in 2005-07</i>
Ar	Historic Monument	B	C	INT 9153
As	Freud Passage	B	C	INT 9156 & 9157
At	Booth Is, Port Charcot & Pleneau Is	B	C	INT 9158 35% complete. <i>Blocks surveyed by Xplore Expeditions/SHOM 2013</i>
Au	Gunnel Channel	B	C	INT 9108 & 9161
Av	Pourqoi Pas Island	C	C	INT 9163 & 9161
Aw	Cierva Cove	A	C	INT 9165 50% complete. <i>Surveyed by Spain in 2016 & Colombia 2017</i>
Ax	Orne Harbour	B	A	INT 9103 95% complete. <i>Block surveyed by UK in 2013</i>
Ay	Mickkelsen Harbour	B	A	INT 9165 95% Complete. <i>Surveyed by Colombia 2017</i>
Az	Wilhelmina Bay	B	B	INT9166, 9157 & 9158

SOUTH ORKNEY ISLANDS

MSR*	Name	Usage category	Survey category	Notes and INT chart coverage. Published and proposed.
1	South Orkney offshore route	C	B & C	INT 9140 <i>Partly surveyed by Argentina 2010-16</i>
2	Washington Strait	C	A	INT 9140 <i>Block surveyed by Argentina 2010-11</i>
3	Lewthwaite Srait	C	C	INT 9140 Unsurveyed
4	SE approaches to Signy Island	B	A & B	INT 9141 & INT 9140. 75% fully surveyed. <i>Block surveyed by UK 1997</i>
5	SW approaches to Signy Island	B	B	INT 9141 & INT 9140 Modern survey required. Last surveyed in 1966
6	Transit route North East	B	C	INT 9140

Main corridors

Branch corridors and approaches

MSR	Name	Usage category	Survey category	Notes and INT chart coverage. Published and proposed.
A	Scotia Bay	B	A	100% surveyed, INT 9142 & INT 9140 <i>Blocks surveyed by Argentina in 2010-12</i>
B	Approaches to Uruguay Cove	C	C	INT 9140
C	Iceberg Bay and Shingle Cove	B	A+C	INT 9141 1000% <i>Blocks surveyed by UK in 2001</i>
D	Marshall Bay	C	B & C	INT 9141. <i>Block surveyed by UK in 1964</i>
E	Norway Bight and Approaches	C	C	INT 9140 Unsurveyed
F	Borge Bay and approaches	A	A	INT 9141 100%. <i>Block surveyed by UK in 1997</i>
G	Monroe Island and approaches.	B	B & C	INT 9140 Unsurveyed

II. MAINLAND ANTARCTICA**

Main corridors

MSR	Name	Usage category	Survey category	Notes and INT chart coverage. Published and proposed.
1	Hobart to Macquarie Island	C	A + B	Annual re-supply station by Aurora Australis. Tourist vessels and fishing boats Charts - Hobart AUS173 and 174 Macquarie Island – AUS604 Cape Darnley to Tasmania - INT 74 (AUS 4074)
2	Hobart to Casey station	C	A + B	Annual re-supply of station by Aurora Australis and other vessel plus occasional tourist vessels. Charts. Hobart AUS173 and 174 Casey - INT9021 (AUS601) Cape Darnley to Tasmania - INT 74 (AUS 4074)
3	Hobart to Davis	C	A + B	Annual re-supply of station by Aurora Australis and other vessel plus occasional tourist vessels Charts - Hobart AUS173 and 174 Davis – INT9032(AUS602) Cape Darnley to Tasmania - INT 74 (AUS 4074)
4	Hobart to Mawson	C	A+B	Annual re-supply of station by Aurora Australis and other vessel plus occasional tourist vessels Charts Hobart AUS173 and 174 Mawson – AUS600 Cape Darnley to Tasmania - INT 74 (AUS 4074) Magnet Bay to Cape Rouse – INT 9035 AUS449
5	Hobart to Heard Island	C	A+C	Marine science voyage by Aurora Australis, customs patrol vessels plus occasional tourist and fishing vessels. Charts Hobart AUS173 and 174 Heard Island – AUS605 Cape Darnley to Tasmania - INT 74 (AUS 4074) Magnet Bay to Cape Rouse – INT 9035 AUS449
6	Fremantle to Heard Island	C	A+C	Marine science voyage by Aurora Australis, customs patrol vessels plus occasional tourist and fishing vessels.
7	Hobart to Commonwealth Bay	C	A+C	Occasional visits by Aurora Australis, Astrolabe and occasional tourist vessels Charts - Hobart AUS173 and 174 Commonwealth Bay – INT 9014 AUS603
8	Davis to Larsemann Hills	C	A+C	Occasional visits by Aurora Australis, Chinese re-supply vessel Xue Long and Russian re-supply vessels. No charts exist of the approaches to the Larsemann Hills Sandjeford Bay to Cape Rundingen INT 9030 AUS 451
9	Davis to Sansom Island	C	C	No chart coverage except at small scale. Scandjeford Bay to Cape Rundingen – INT 9030 AUS 451 scale 1:500,000. No chart exists on the approaches to Sansom Is.

MSR	Name	Usage category	Survey category	Notes and INT chart coverage. Published and proposed.
10	Casey to Davis	C	C	Occasional use by Aurora Australis during re-supply voyages. Small scale Chart coverage only. Approaches to Casey - INT 9021 (AUS601), Mill Island to Cape Poinsett - INT 9020 (AUS454), Cape Darnley to Tasmania - INT 74 (AUS4074), Cape Rundingen to Cape Filchner - INT 9031 (AUS452) Sandefjord Bay to Cape Rundingen - INT 9030 (AUS451) Approaches to Davis Anchorage
11	Davis to Mawson	C	C	Annual resupply voyages. Small scale chart coverage only. Approaches to Davis Anchorage - INT 9032 (AUS 602) Sandefjord Bay to Cape Rundingen - INT 9030 (AUS451) Cape Rouse to Sandefjord Bay – INT 9033 (AUS450) Magnet Bay to Cape Rouse – INT 9035 (AUS449) Approaches to Mawson – INT 9036 (AUS600)
12	Fremantle to mawson	C	A + C	Occasional use by Aurora Australis for resupply voyages. Fremantle AUS113, AUS112, AUS754, AUS334 Cape Leeuwin to Southeast Indian Ridge – INT 710 (AUS 4710) Cape Darnley to Tasmania - INT 74 (AUS4074), Approaches to Mawson – INT 9036 (AUS600)
-	Hobart and Fremantle to Southern Ocean	C	A+C	Marine science voyages

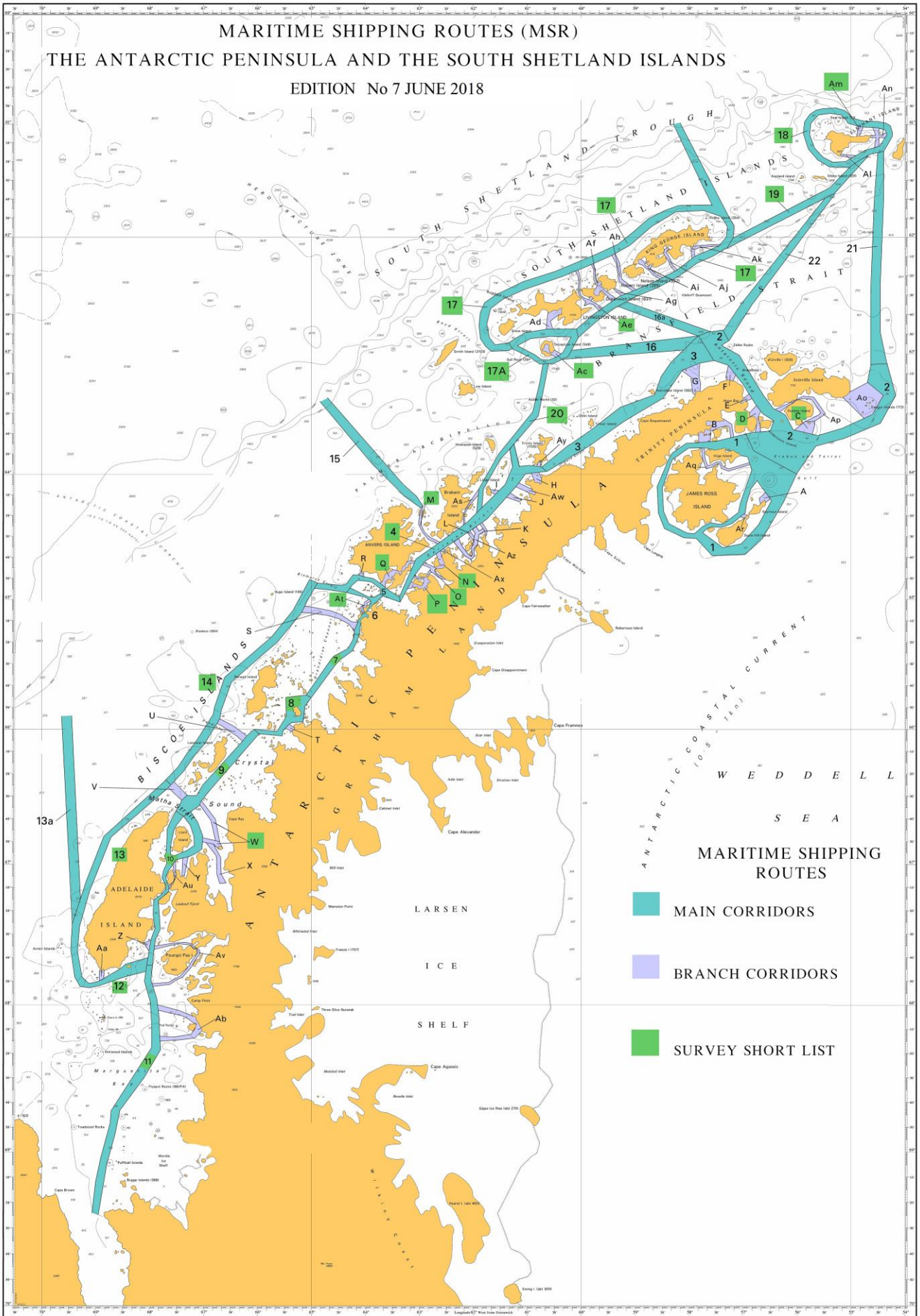
Branch corridors and approaches

MSR	Name	Usage category	Survey category	Notes and INT chart coverage. Published and proposed
	Macquarie Island	C	A+C	AUS604
A	Casey	C	A+C	INT9021 (AUS601) <i>Block surveyed by Australia 2013-15</i>
B	Davis	C	A+C	INT9032(AUS602)
C	Mawson	C	A+C	AUS600 – Proposed survey area Feb – Mar 2012. Four areas completed 2011/12 season
D	Commonwealth Bay	C	C	AUS603 - Proposed survey area Dec – Jan 2012
E	Cape Darnley	C	C	Potentially shallow unsurveyed area north of Cape Darnley restricts passage of vessels proceeding west from Prydz Bay. INT 9033 (AUS450)
F	Rouse Island	C	C	Infrequent visits. Potential anchorage / safe haven south of Davis Station for ships visiting Antarctic Stations in southern Prydz Bay.
8	Davis to Larsemann Hills	C	A + C	Occasional visits by Aurora Australis, Chinese re-supply vessel Xue Long and Russian re-supply vessels. No charts exist of the approaches to the Larsemann Hills
9	Davis to Sansom Island	C	C	No chart coverage except at small scale Sandjeford Bay to Cape Rundingen – AUS452 scale 1:500,000. No charts exist on the approaches to Sansom Island
10	Casey to Davis	C	C	Occasional use by Aurora Australis during re-supply voyages. Small scale Chart coverage

				<p>only. Approaches to Casey - INT 9021 (AUS601), Mill Island to Cape Poinsett - INT 9020 (AUS454), Cape Darnley to Tasmania - INT 74 (AUS4074), Cape Rundingen to Cape Filchner - INT 9031 (AUS452) Sandefjord Bay to Cape Rundingen - INT 9030 (AUS451) Approaches to Davis Anchorage - INT 9032 (AUS602)</p>
11	Davis to Mawson	C	C	<p>Annual resupply voyages. Small scale chart coverage only. Approaches to Davis Anchorage - INT 9032 (AUS 602) Sandefjord Bay to Cape Rundingen - INT 9030 (AUS451) Cape Rouse to Sandefjord Bay – INT 9033 (AUS450) Magnet Bay to Cape Rouse – INT 9035 (AUS449) Approaches to Mawson – INT 9036 (AUS600)</p>

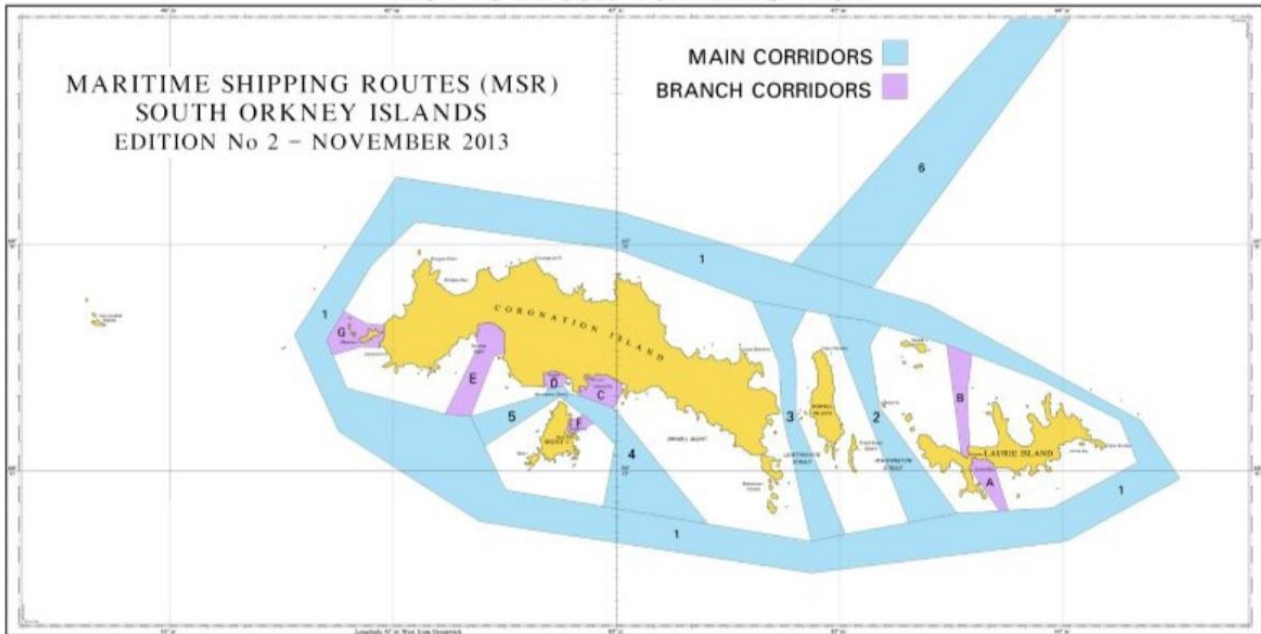
MARITIME SHIPPING ROUTES (MSR) THE ANTARCTIC PENINSULA AND THE SOUTH SHETLAND ISLANDS

EDITION No 7 JUNE 2018



NOT TO BE USED FOR NAVIGATION

NOT TO BE USED FOR NAVIGATION



NOT TO BE USED FOR NAVIGATION

